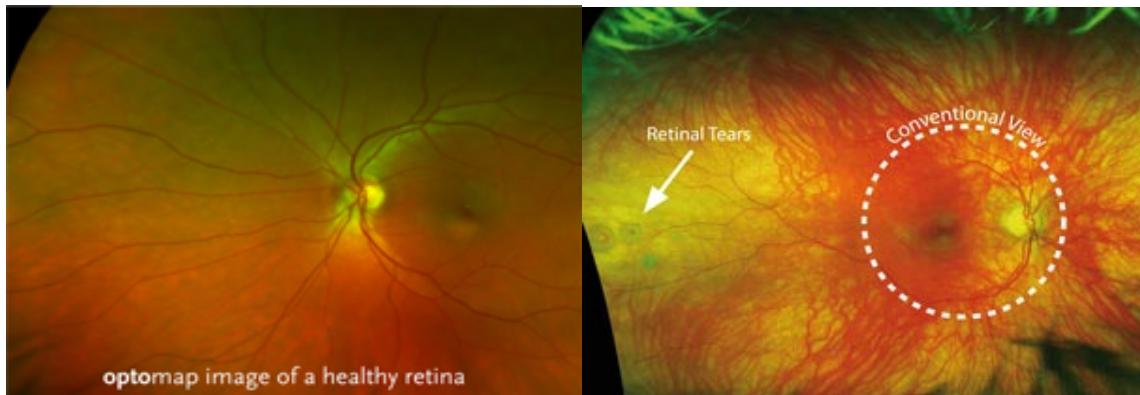


Check and maintain the health of your eyes with our new advanced technology.

Many eye problems can develop without warning and progress with no symptoms. Early on, you might not even notice any change in your vision. However, diseases such as macular degeneration, glaucoma, retinal tears or detachments, as well as other health problems such as diabetes and high blood pressure can be detected with a thorough exam of the retina.

What our Optomap Retinal Photo provides you!

- A scan to confirm a healthy eye or, to detect the presence of disease.
- An overview or map of the retina, giving your doctor a more detailed view than cannot be achieved by other means.
- A permanent record for your medical file, enabling your doctor to make important comparisons if potential problems show themselves at a future examination.



Our doctors highly value and recommend these retinal images be taken every year to better diagnose and manage eye diseases that typically cannot be seen by other techniques. We have caught not only sight threatening eye diseases but even life threatening conditions such as cancer with the Optomap scans. As a new protocol we will be performing this scan on all of our patients ages 10 and up as part of your yearly exam. Because this technology is so new, insurance does not currently cover this service. For this reason, the fee for this service will be \$24.00 for children ages 10-18, and \$29.00 for adults age 19+.

I have read and understand the Optomap Agreement.

X _____